



Rolling Rock Building Stone, Inc., 40 Rolling Rock Road, Boyertown, PA 19512
 Phone: (610) 987-6226, Fax: (610) 987-9779, Web: www.rollrock.com

Natural Stone is a relatively hard, naturally formed mineral or petrified matter, produced by nature. Therefore, considerable variations including, but not limited to, color, texture, size, and cleft will occur in all natural stone. Samples, sample panels, brochures, photographs, computer-generated pictures, and the Internet may be, in some measure, different from the stone you actually receive. Laboratory tests, if conducted, are performed on small samples and cannot be totally accurate because of the limited scale of the tests. Please be sure that all involved parties are aware of these facts, so an informed decision can be made regarding natural stone.

Use of Chemicals: Acid or chemical cleaners are not recommended because of the inability of the user to control its use, and are never recommended for Limestone and Marble. User accepts all risks.

DISCLAIMER OF WARRANTY AND DAMAGES:
 Rolling Rock Building Stone Inc. products are provided to you "AS IS" without warranty of any kind, either expressed or implied, including, but not limited to the implied warranties of merchantability, or fitness for a particular purpose.

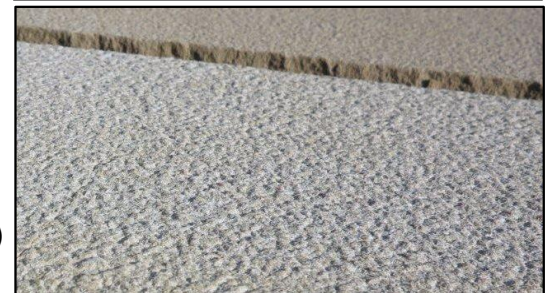
GoldenRod™ Product Guide

Pattern Cut Pavers

Nominal Size Imperial, inch	Actual Size Metric, cm	Thickness Inches, (cm) Finish: Sandblast	Average Pieces Per Crate	Approx. Weight Per Crate lbs.
24 x 24	60 x 60	1-3/16, (3cm)	32	2550
24 x 36	60 x 90			3050
Mixed Sizes	8 pc. pattern			82 = 200SF

Coping, Hearths, Mantles, Sills & Treads

	Actual Size (Imperial) Inch x feet-inch	Thickness (Inches) Finish: Bush hammer	Average Pieces Per Pallet	Approx. Weight Per Pallet (lbs.)
TV Sill	2.5 x 48	2	50	1140
Sill Sizes	6 x 72		24	1950
	8 x 72			2570
Tread Sizes	12 x 48	24" x 96" hearth size is a three piece hearth	12	1280
	12 x 72			1900
	14 x 48			1500
	14 x 72			2250
	18 x 72			2900
	24 x 48			2580
	24 x 72			3850
	24 x 96			5100
Bull Nose	14 x 48 SB	2	12	1500
Caps	26 x 26	2	15	2217
	30 x 30		10	1967



GoldenRod™ Product Specifications

Geology: Sandstone

ASTM C97 Density: 160.2 lbs/ft³

ASTM C97 Absorption: 2.04%

ASTM C99 Modulus of Rupture: 1950 PSI (Dry/ Perpendicular), 1350 PSI (Wet, Perpendicular)

ASTM C170 Compressive Strength: 19,510PSI (Dry/ Parallel), 10,590 PSI (Wet, Parallel)

17,510 PSI (Dry/ Perpendicular), 15,020 PSI (Wet, Perpendicular)

Product Type & Finish:

- **Pattern Cut Pavers:** Sawn 6 sides with SANDBLAST FINISH top.
- **Sill, Tread, Cap:** Sawn 6 sides with BUSH HAMMER top and rock-pitched face on 1 long & 2 short edges. Bull nose (BN) is sawn 6 sides with SANDBLAST finish top and 1 long bull nose edge.

Pattern Cut Size: GoldenRod™ Pavers are cut to near precise metric dimensions, producing a very high quality product having square corners. Imperial length and width measurements as indicated in inches reflect a nominal size which is approximately 1/2" short of the full dimension.

Special Notice on Pattern Size: This product is an *excellent* choice for dry-laid work due to the stone's uniform thickness & cut-to-square quality in addition to the ability to match pieces without extensive field cutting.

(Example - Two 30 cm lengths = 60 cm.)

Custom: On larger projects with proper planning and advance notice we can order special sizes or custom fabricated material from the factory to meet job specific requirements in an effort to reduce on site time and labor and reduce overall project cost. Please consult a sales representative for more information.



www.imPORTstone.net